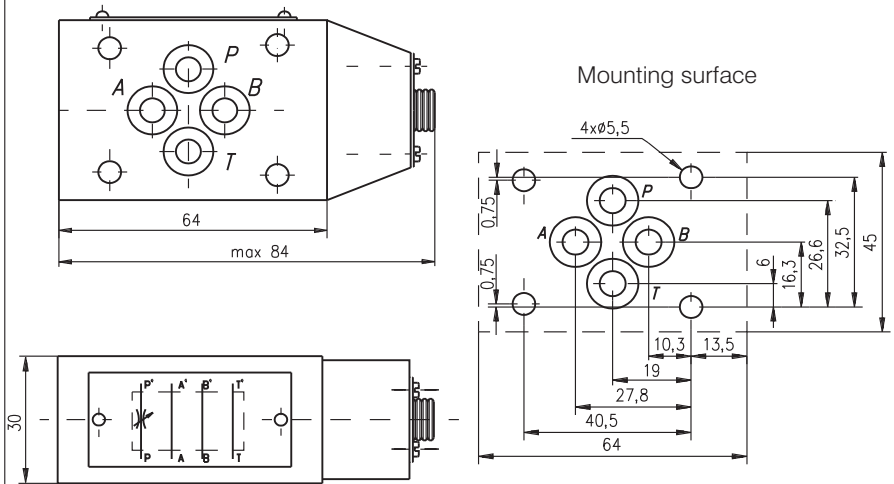


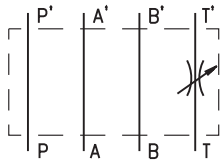
DESCRIPTION

- ✓ Adjustable throttles for modular mounting-DR6M/32...
- ✓ The valve throttles , or completely stops the flow in any direction , so creating resistance to flow regulation and support in the hydraulic system.
- ✓ Mounting surface CETOP3 ; NG6

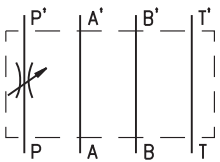
DIMENSIONS



SYMBOL



DR6M/32T



DR6M/32P

ORDERING CODE

DR 6 M / 32 ***

Adjustable throttle

Nominal bore 6mm.

Modular mounting

Rated pressure:

up to 320 bar.-32

Valve position:

at line T - T

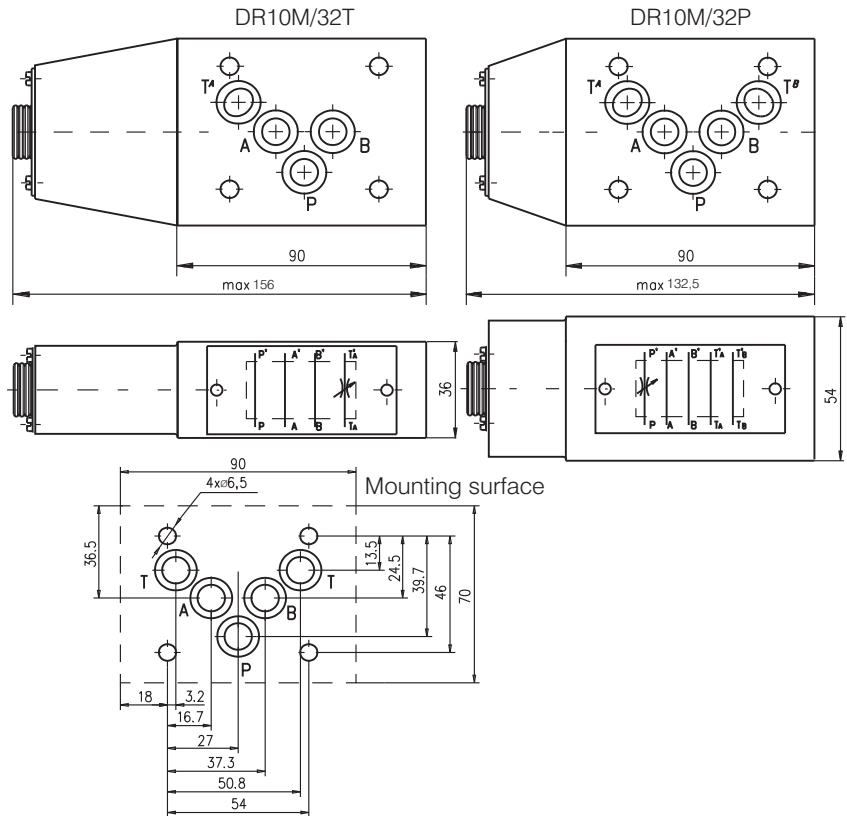
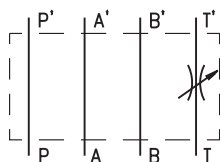
at line P - P

TECHNICAL DATA

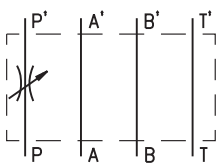
Weight	DR6M/32T	0,710 kg
	DR6M/32P	0,710 kg
Max. Pressure		320 bar
Rated flow ($\Delta p=2,5$ bar.)		20 l/min
Working liquid-hydraulic oils with characteristics:		
-viscosity		10...400 cSt
-degree of filtration		0,025 mm
-temperature		-20...+80°C

DESCRIPTION

- ✓ Adjustable throttles with for modular mounting-DR10M/32...
- ✓ The valve throttles , or completely stops the flow in any direction , so creating resistance to flow regulation and support in the hydraulic system.
- ✓ Mounting surface CETOP5 ; NG10

DIMENSIONS

SYMBOL


DR10M/32T



DR10M/32P

ORDERING CODE

DR	10	M	/	32	***
----	----	---	---	----	-----

Adjustable throttle

Nominal bore 10mm.

Modular mounting

Rated pressure: up to 320 bar.-32

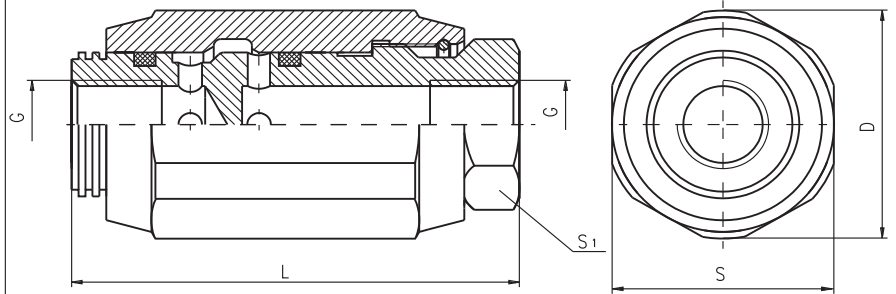
 Valve position: at line T - T
 at line P - P

TECHNICAL DATA

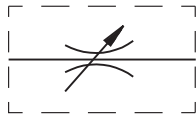
Weight	DR10M/32T	2,200 kg
	DR10M/32P	2,850 kg
Max. Pressure		320 bar
Rated flow ($\Delta p=2,5$ bar.)		40 l/min
Working liquid-hydraulic oils with characteristics:		
-viscosity		10...400 cSt
-degree of filtration		0,025 mm
-temperature		-20...+80°C

DESCRIPTION

- ✓ Adjustable throttle for pipe mounting-DR-...
- ✓ The valve throttles , or completely stops the flow in any direction , so creating resistance to flow regulation and support in the hydraulic system.

DIMENSIONS


TYPE	L	S	S1	D	G
	mm.				
DR-1/4"	65	32	22	34	1/4"
DR-3/8"	65	36	24	38	3/8"
DR-1/2"	82	42	29	44	1/2"
DR-3/4"	100	55	36	59	3/4"
DR-1"	126	65	45	70	1"

SYMBOL

ORDERING CODE
DR - ***

Adjustable throttle

Mounting thread:

G1/4 -1/4

G3/8 -3/8

G1/2 -1/2

G3/4 -3/4

G1 -1

TECHNICAL DATA

Max. Pressure		320 bar
Rated flow ($\Delta p=2,5$ bar.)	-1/4	12 l/min
	-3/8	20 l/min
	-1/2	45 l/min
	-3/4	80 l/min
	-1	160 l/min
Working liquid-hydraulic oils with characteristics:		
-viscosity		10...400 cSt
-degree of filtration		0,025 mm
-temperature		-20...+80°C